

# MobiNET

## LTE Management Platform



### OVERVIEW

EION MobiNET is a simple, comprehensive and powerful management platform for LTE operators to build, manage and support LTE devices' lifecycle from installation, provisioning, maintenance and support. MobiNET is easy to install, use and can be scaled to manage any sized network.

MobiNET provides user friendly and easily customizable dashboard, comprehensive reporting functionalities, graphing options, required data for planning and troubleshooting, events management and seamless integration with OSS layers.

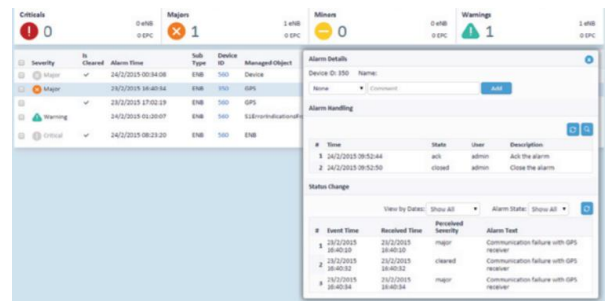
MobiNET provides ensures Quality of Service and supports remote CPE management through monitoring and diagnosis for data, voice and video services on TR-069 CPEs.

MobiNET provides comprehensive carrier-class traffic management features including maximization of traffic capacity, detects network performance degradation, identifies network bottlenecks and notifies the same for streamlines troubleshooting and efficient operation.

MobiNET template provides configuration profiles to ease device configurations accelerating deployments. Bulk configuration changes can be applied to a group of devices. Rollback option is available to go back to previous configurations.

### PRODUCT FEATURES

- Complete management and visibility
- Action driven operational flows
- Fail-safe configuration deployment
- Rollback option
- Pre-provisioning for new devices
- Network level CLI capabilities for bulk transactions
- Topological presentation of devices
- Geographical representation of devices
- Comprehensive Reporting and graphs
- Interface with OSS/BSS systems
- Security, user authorization and authentication
- Long term traffic monitoring and performance
- Network intelligent analysis
- Customizable dashboard view
- Easy installation, configuration and web-based management platform.



### ORDERING INFORMATION

| Product Code   | Product Name                    |
|----------------|---------------------------------|
| 4181-00-ML-NET | MobiNET LTE Management Platform |